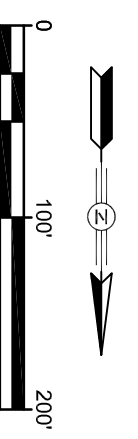
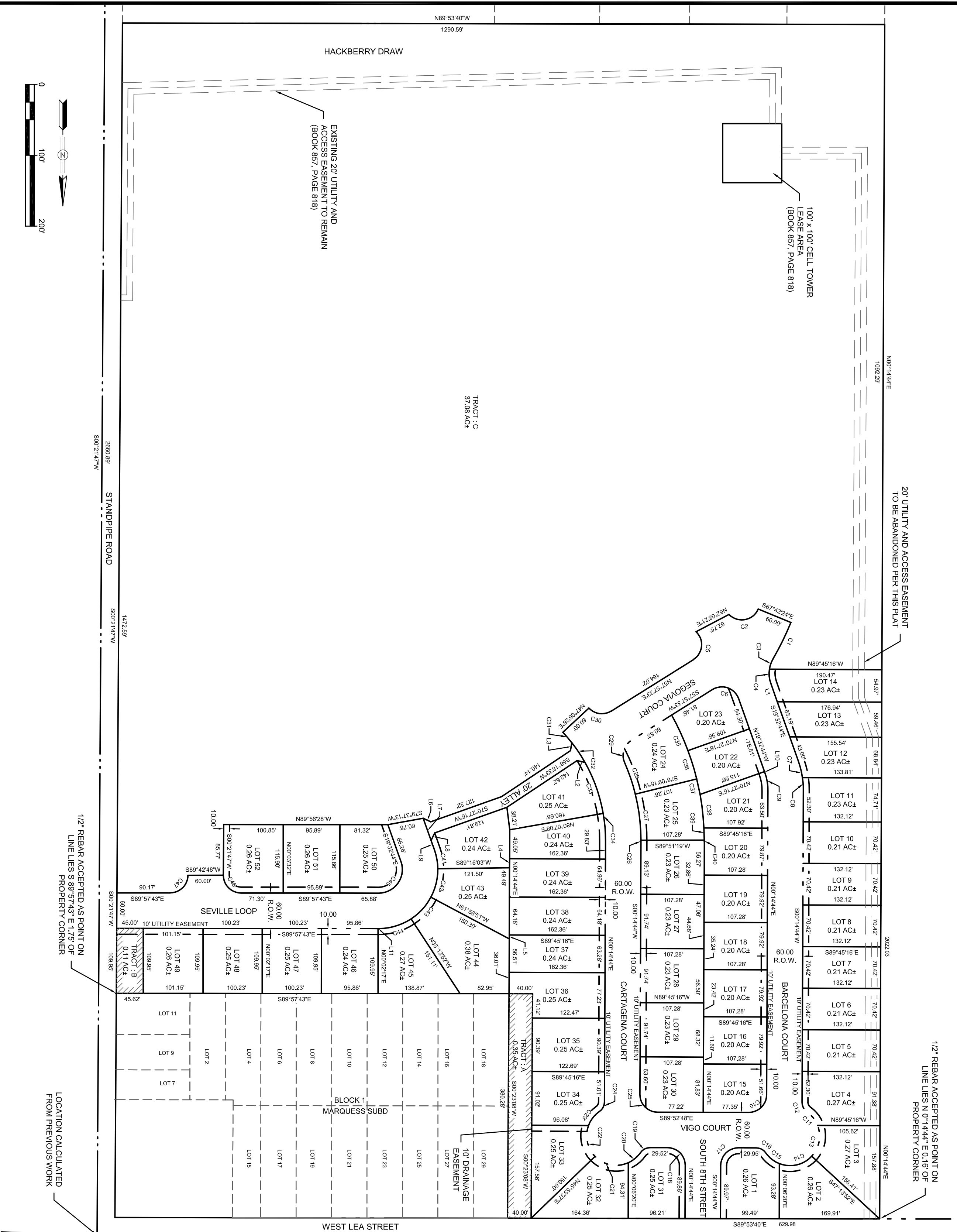


CIELO LINDO SUBDIVISION UNIT 1

A PORTION OF THE E 1/2 NE 1/4 OF SECTION 11, TOWNSHIP 22 SOUTH, RANGE 26 EAST, N.M.P.M.
 CARLSBAD — EDDY COUNTY — NEW MEXICO



SMITH ENGINEERING CONSUMERS

SOLUTIONS FOR TODAY...
 VISION FOR TOMORROW

401 Pennsylvania
 Roswell, NM 88201
 Phone: (575) 622-8866
 Fax: (575) 623-3951

LINE DATA TABLE

NUMBER	LENGTH	BEARING
L1	32.79'	S19° 32' 43.68"E
L2	13.74'	N77° 05' 56.51"W
L3	13.74'	N9° 43' 02.36"E
L4	15.47'	N0° 14' 44.07"E
L5	6.74'	N0° 14' 44.07"E
L6	14.14'	N64° 32' 43.68"W
L7	40.00'	N19° 32' 43.68"W
L8	14.14'	S25° 27' 16.32"W
L9	16.58'	N19° 32' 43.68"W
L10	1.97'	S19° 32' 43.68"E
L11	1.12'	S89° 57' 42.63"E

CURVE DATA TABLE

NUMBER	DELTA ANGLE	CHORD BEARING	CHORD LENGTH	RADIUS (FT.)	ARC LENGTH (FT.)
C1	7° 51' 30"	N26° 13' 20"E	68.52	500.00	68.58
C2	114° 29' 13"	N79° 32' 12"E	50.46	30.00	59.95
C3	21° 38' 32"	N19° 19' 49"E	18.77	50.00	18.89
C4	28° 03' 17"	N5° 31' 05"W	24.24	50.00	24.48
C5	104° 42' 30"	N5° 36' 18"E	47.51	30.00	54.83
C6	102° 29' 43"	S70° 47' 35"E	46.79	30.00	53.67
C7	11° 11' 52"	S13° 56' 48"E	29.27	150.00	29.32
C8	8° 35' 36"	S4° 03' 04"E	22.48	150.00	22.50
C9	19° 47' 28"	S9° 39' 00"E	30.93	90.00	31.09
C10	89° 52' 28"	S45° 10' 58"W	42.38	30.00	47.06
C11	33° 35' 37"	S38° 06' 28"E	28.90	50.00	29.32
C12	55° 09' 00"	S27° 19' 46"E	18.52	20.00	19.25
C13	64° 04' 47"	S10° 43' 44"W	53.05	50.00	55.92
C14	68° 35' 47"	S77° 04' 01"W	56.35	50.00	59.66
C15	33° 54' 19"	N51° 40' 57"W	29.16	50.00	29.59
C16	55° 09' 00"	N62° 18' 17"W	18.52	20.00	19.25
C17	89° 52' 28"	S45° 10' 58"W	42.38	30.00	47.06
C18	90° 07' 32"	S44° 49' 02"E	42.47	30.00	47.19
C19	55° 13' 08"	N62° 30' 39"E	18.54	20.00	19.28
C20	30° 54' 47"	N50° 21' 28"E	26.65	50.00	26.88
C21	70° 04' 46"	S79° 08' 48"E	57.41	50.00	61.16
C22	64° 20' 01"	S11° 56' 22"E	53.24	50.00	56.14
C23	35° 00' 26"	S37° 43' 52"W	30.08	50.00	30.55
C24	54° 59' 21"	S27° 44' 24"W	18.47	20.00	19.19
C25	90° 07' 32"	N44° 49' 02"W	42.47	30.00	47.19
C26	0° 23' 25"	N0° 03' 02"E	2.25	330.00	2.25
C27	13° 42' 05"	N6° 59' 43"W	78.73	330.00	78.91
C28	9° 51' 13"	N16° 46' 22"W	56.68	330.00	56.75
C29	81° 39' 31"	N17° 07' 47"E	39.23	30.00	42.76
C30	79° 08' 55"	S82° 28' 00"E	38.22	30.00	41.44
C31	4° 57' 24"	S40° 24' 50"E	23.35	270.00	23.36
C32	8° 29' 22"	S33° 41' 27"E	39.97	270.00	40.01
C33	19° 33' 54"	S19° 39' 49"E	91.75	270.00	92.20
C34	10° 07' 36"	S4° 49' 04"E	47.66	270.00	47.72
C35	8° 41' 16"	S24° 47' 01"E	66.24	437.28	66.31
C36	6° 35' 37"	S17° 08' 34"E	50.30	437.28	50.32
C37	3° 30' 34"	S12° 05' 28"E	26.78	437.28	26.78
C38	7° 29' 17"	S6° 35' 32"E	57.11	437.28	57.15
C39	2° 42' 13"	S1° 29' 47"E	20.63	437.28	20.63
C40	0° 23' 25"	S0° 03' 02"W	2.98	437.28	2.98
C41	18° 48' 47"	N10° 08' 20"W	32.69	100.00	32.84
C42	28° 44' 59"	N42° 23' 38"E	49.65	100.00	50.18
C43	33° 16' 10"	N73° 24' 13"E	57.25	100.00	58.07
C44	109° 35' 01"	S35° 14' 47"W	65.37	40.00	76.50
C45	90° 19' 30"	N44° 47' 58"W	42.55	30.00	47.29
C47	89° 40' 30"	S45° 12' 02"W	42.31	30.00	46.55